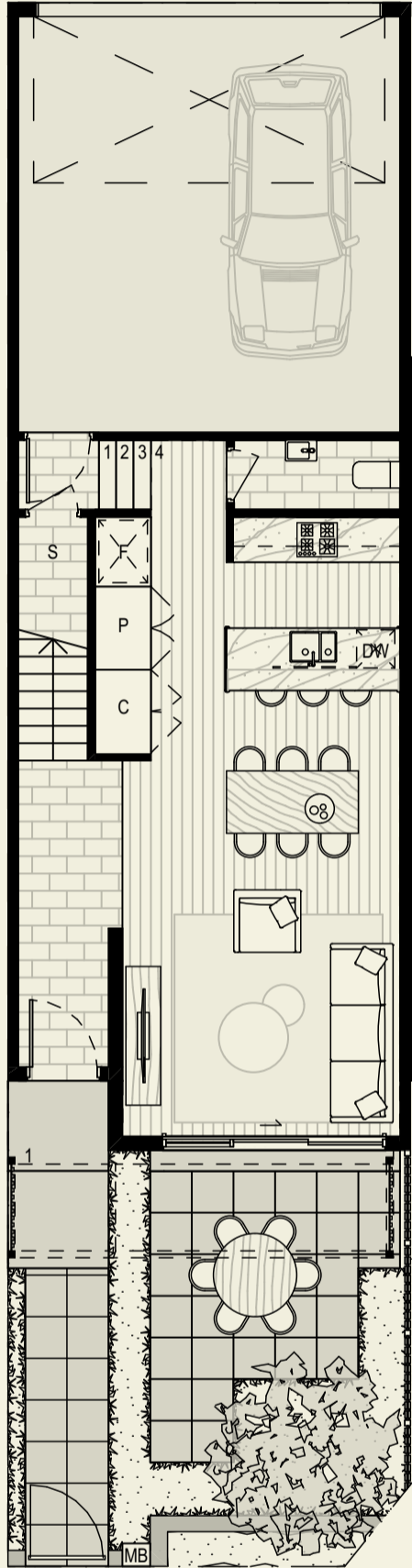
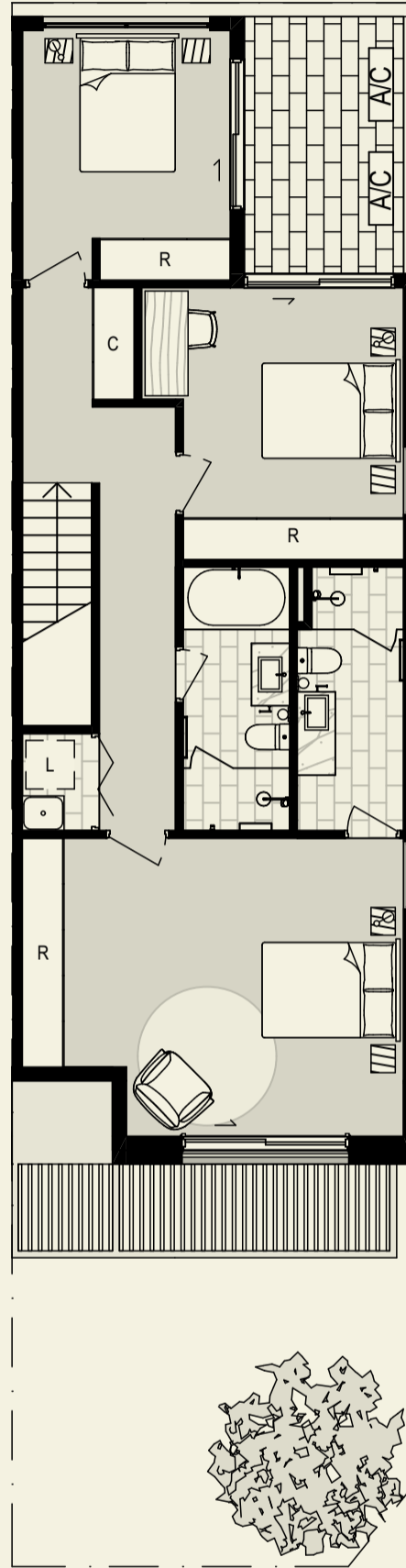


Townhome Type A

3 bedrooms & 2 bathrooms



Ground floor



First floor

Bedroom	3	Ground floor	59.0m ²
Bathroom	2	First floor	82.2m ²
Powder room	1	Garage	36.0m ²
Living	1	Front yard	35.9m ²
Garage car space	2	Balconies	9.6m ²
		Total	222.7m ²



Contact

thebottleworksgeelong.com.au